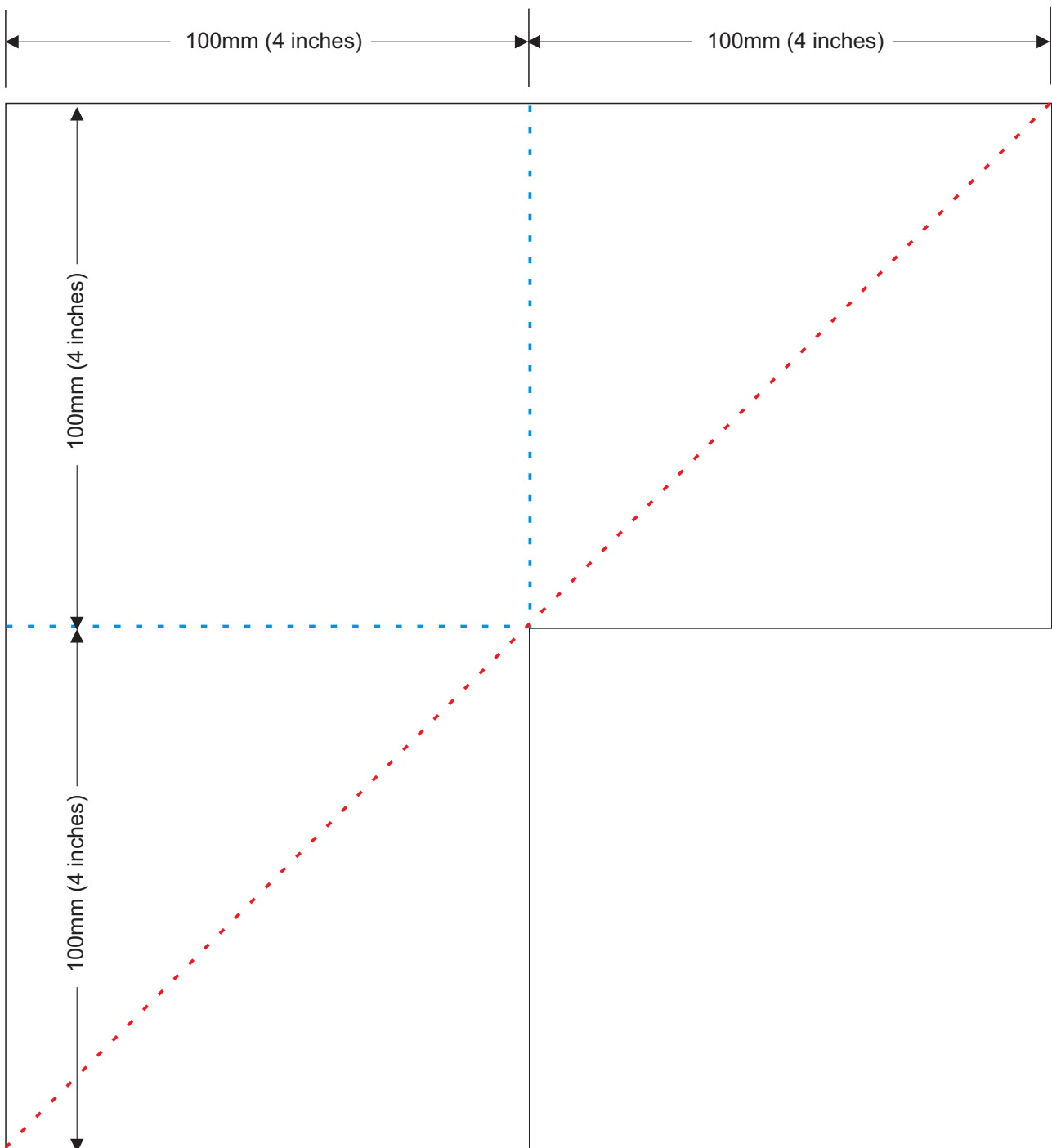


Diamond fold card template 1

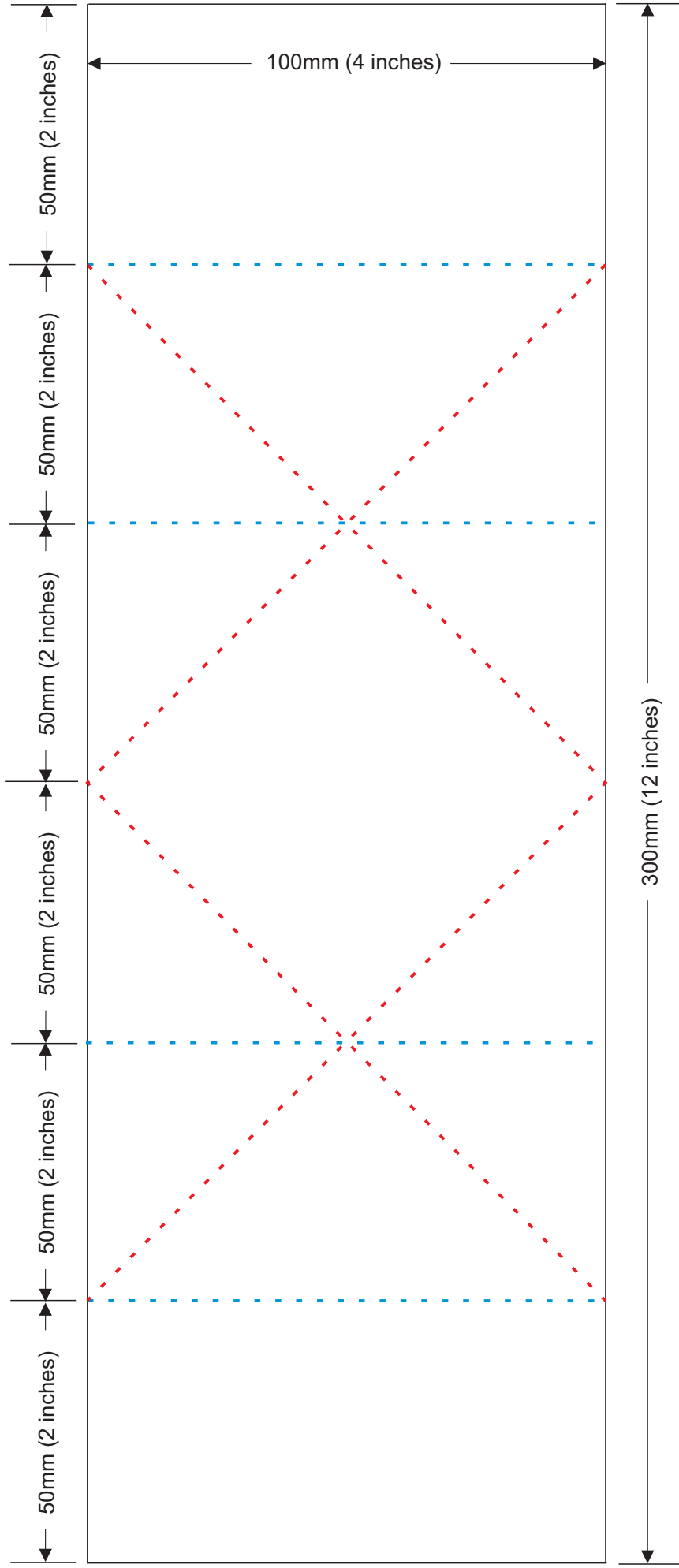


This diagram is not actual size.

The card is made from a sheet of card 200mm x 200mm (8 inches x 8 inches). Mark the edges at 100mm (4 inch) intervals. Cut away the bottom-right square. Score the dotted lines. The blue dotted lines are valley folds and the red dotted lines are mountain folds when viewed from the front. The finished card will measure 100mm (4 inches) square.

Template downloaded from www.prickandstitch.ismycraft.com

Diamond fold card template 2



This diagram is not actual size.

It is made from a sheet of card 300mm x 100mm (12 inches x 4 inches). Mark the long edges at 50mm (2 inch) intervals. Score the dotted lines. The blue dotted lines are valley folds and the red dotted lines are mountain folds when viewed from the front. The finished card will measure 100mm (4 inches) square. Template downloaded from www.prickandstitch.ismycraft.com